

## Remote Control

Before the remote control, You need to install Easyaccess2.0 and Virtual Network Console software. Then login the Easyaccess2.0 with Domain account and password. The software icons are shown in figure 1.

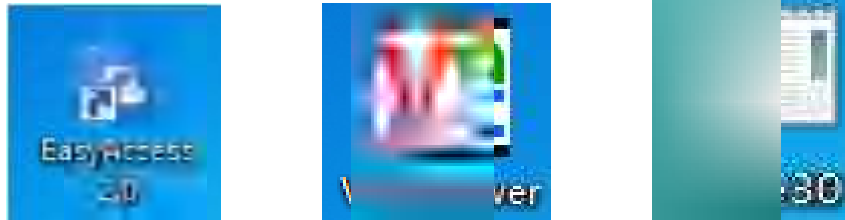


Figure 1

Step 1: Connect to the Internet first, with one end of the cable connected to the network port on the back of the touch screen and the other end connected to the user's network switch or router. Enter the touch screen interface,click the arrow in the lower right corner,and click the setting icon (the interface appears as shown in figure 2), enter password (password:111111) click OK.(the interface appears as shown in figure 3).the network can be automatically or manually configured to the actual situation. manual configuration is described below. check "IP address get form below". correctly enter IP address, gateway address, DNS address, and click apply.

In addition, the interface can be set to change the HMI name and VNC server setting. (as shown in figure 4).

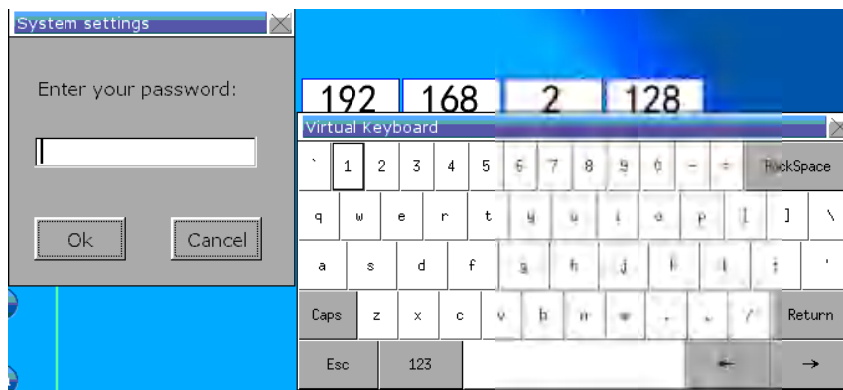


Figure 2



Figure 3

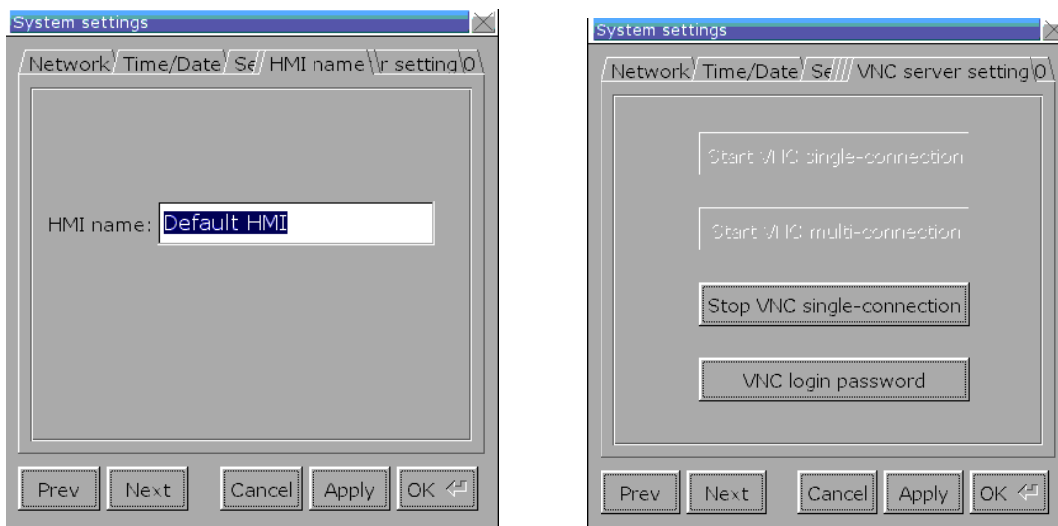


Figure 4

Step 2: Enter the network settings under the touch screen system setting menu, click Easy Access2.0 button, the interface appears as shown in figure 5, click start, if the successful connection shows success.

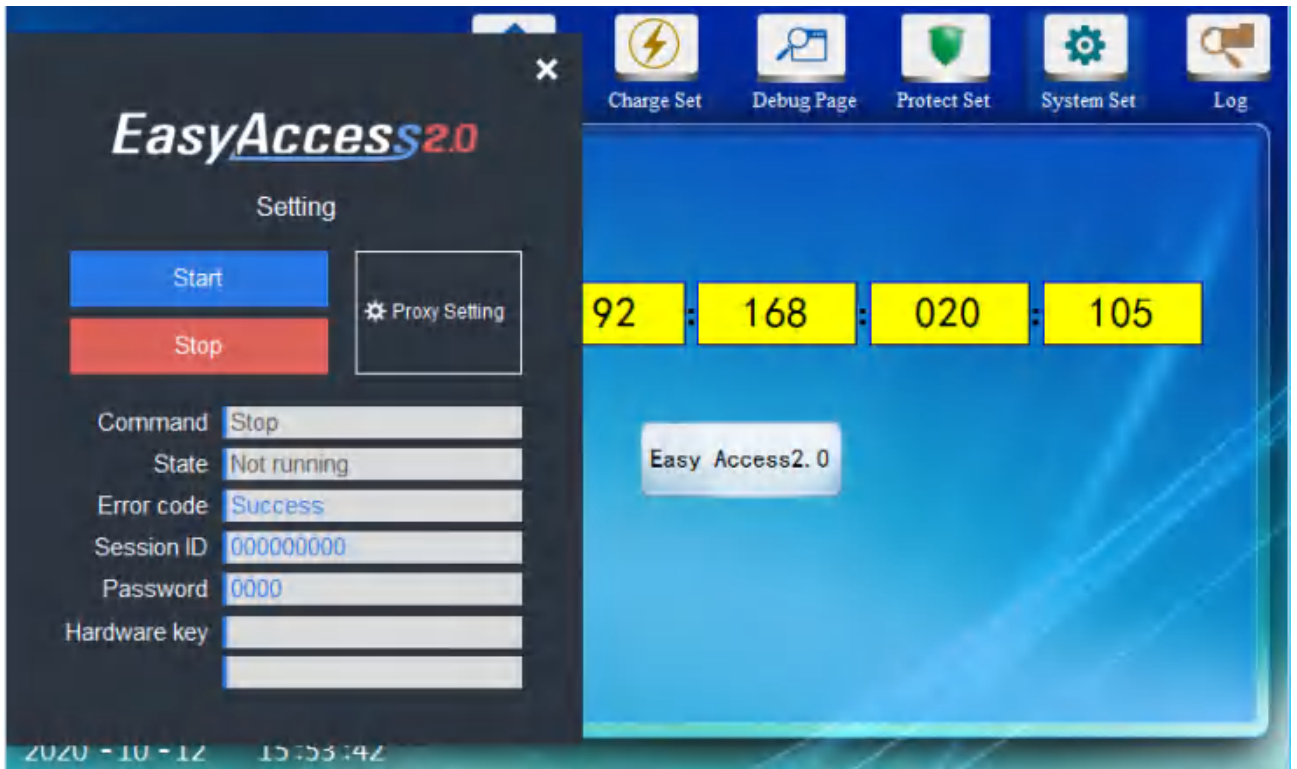


Figure 5

Step 3: Login to EasyAccess 2.0 on your computer, enter Domain account and password, the login interface is shown in figure 6.

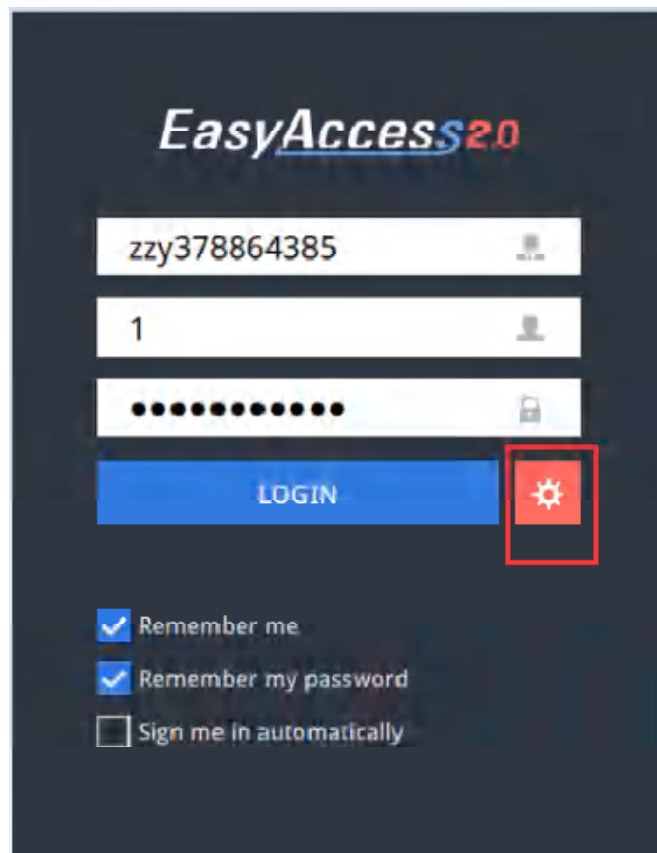


Figure 6

Step 4 : Click the setting button before login in (below in red cycle), the interface appears as shown in figure 7. Choice “ Use China servers” and click OK to confirm and then enter

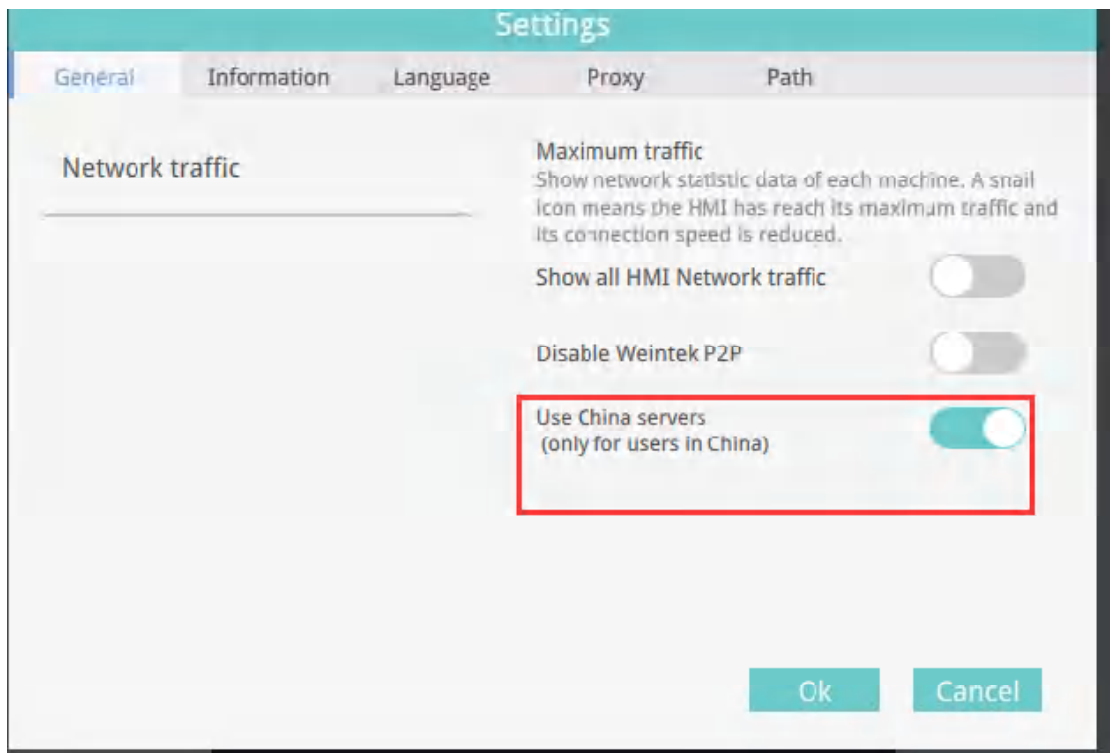


Figure 7

Step 5: Enter success, click the red marked button to set.(the interface appears as shown in figure 8)

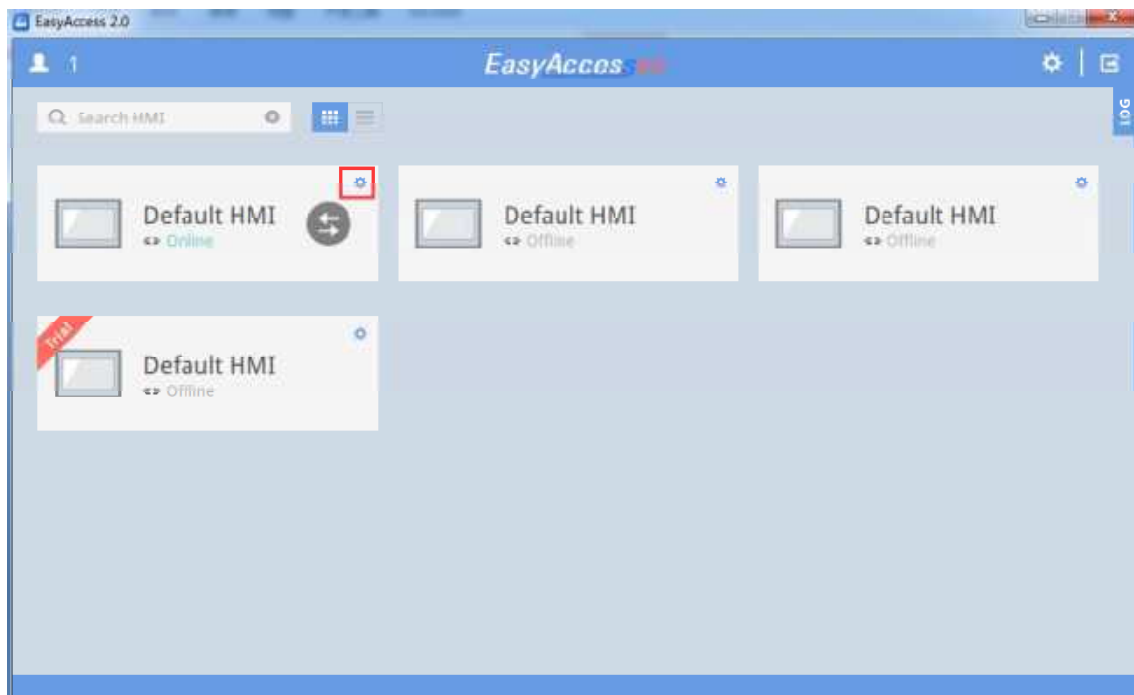


Figure 8

Step 6: Setting interface as shown in figure 9, Follow the red flag to setting enter password: 111111, Click OK.(when access settings, you can choose “Use VNC viewer” or” Use HMI viewer”. only choose one of them.)

Take “Use HMI viewer “for example

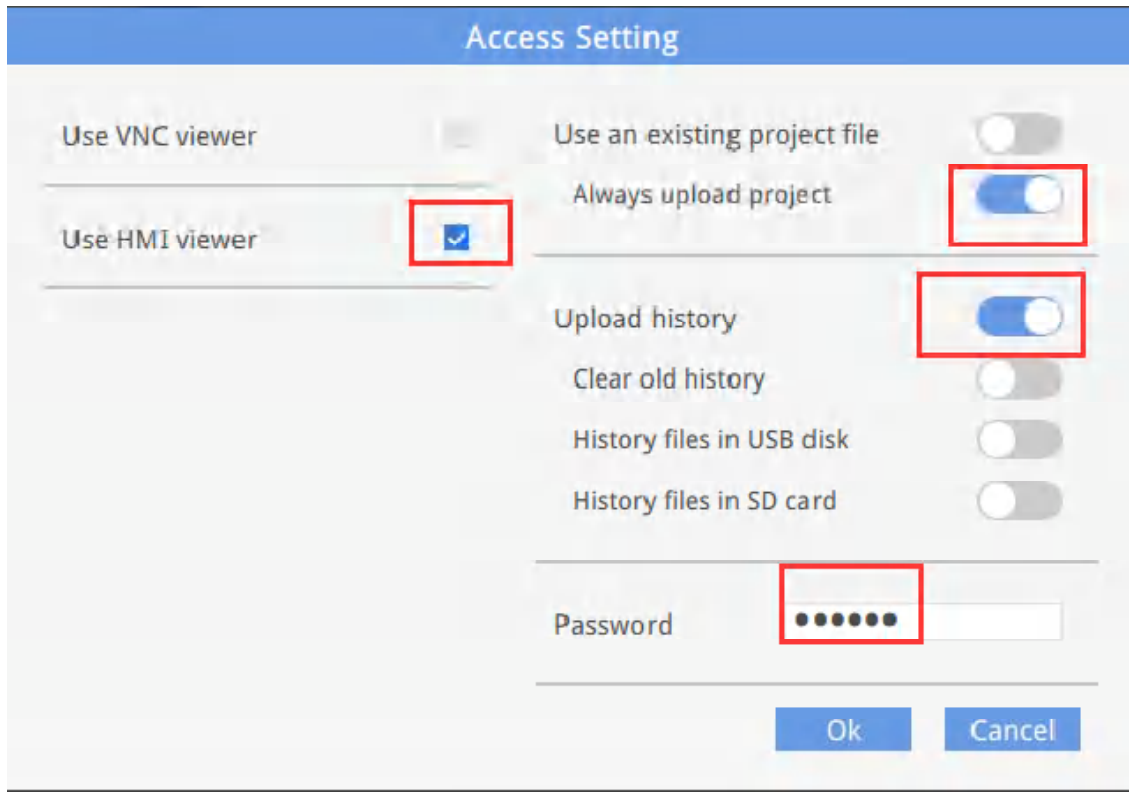


Figure 9

Step 7: Choice the route as below in red marked button.(as shown in figure 10)

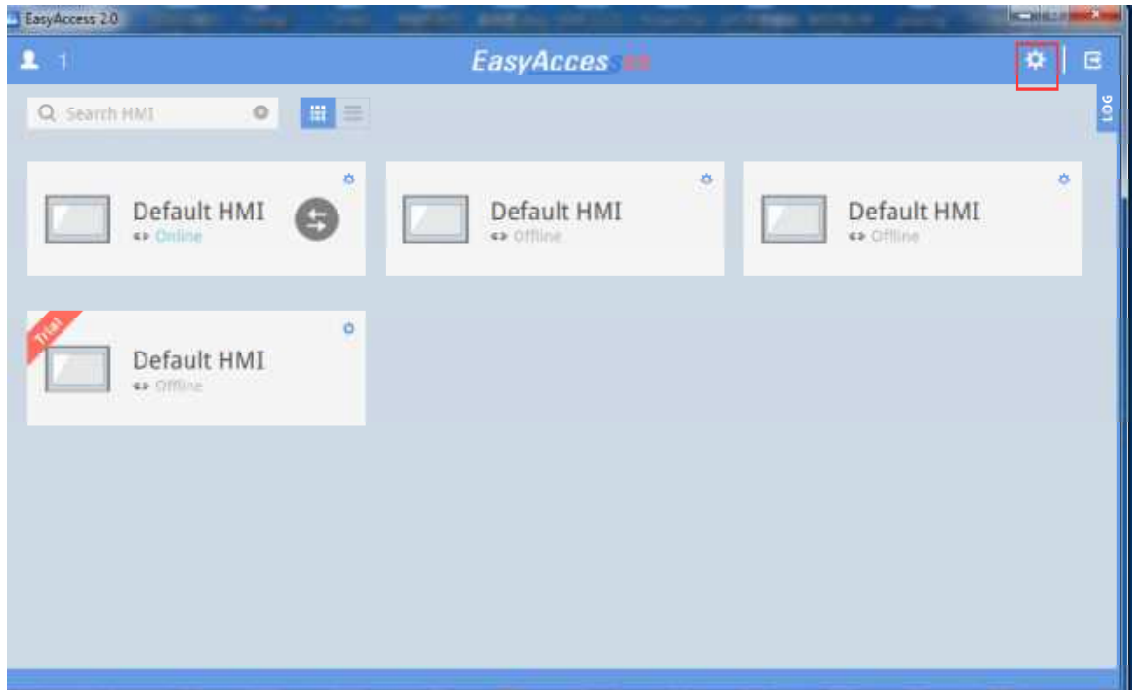


Figure 10

Step 8: Choice “ gui\_e30” Route (as shown in figure 11), click OK.

(When the step 6 is selected as “Use VNC viewer”, choice "vncviewer" route here)

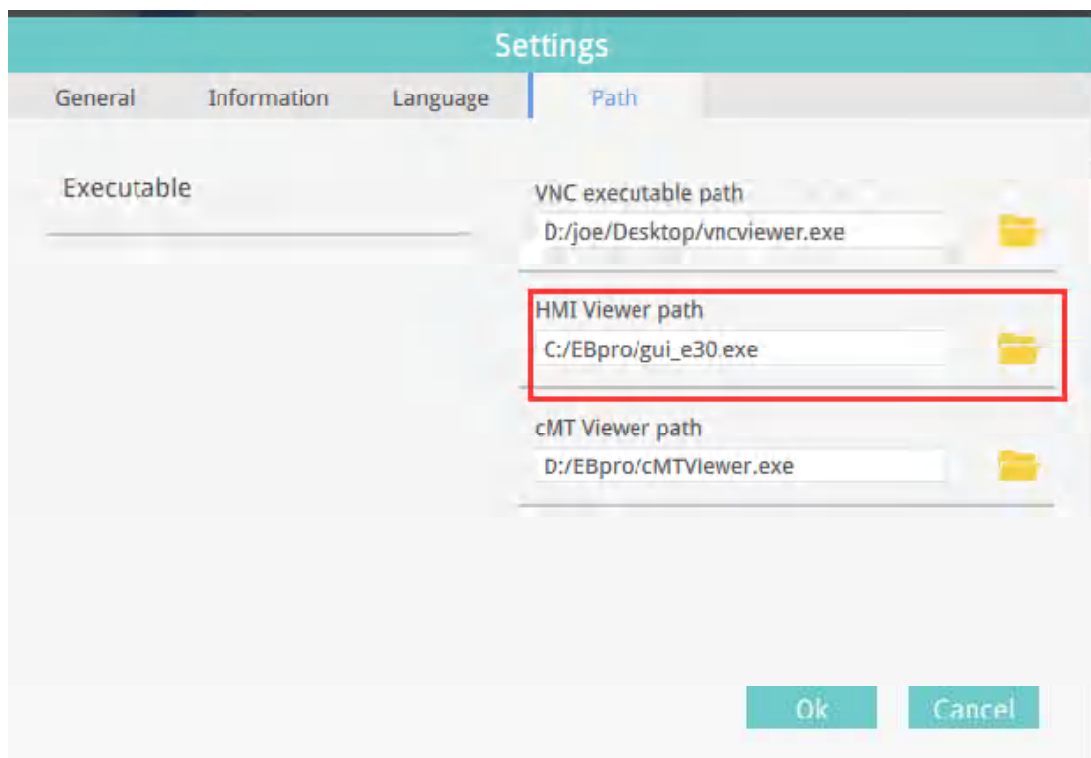


Figure 11

Step 9: Click the connection button, as shown in figure 12.

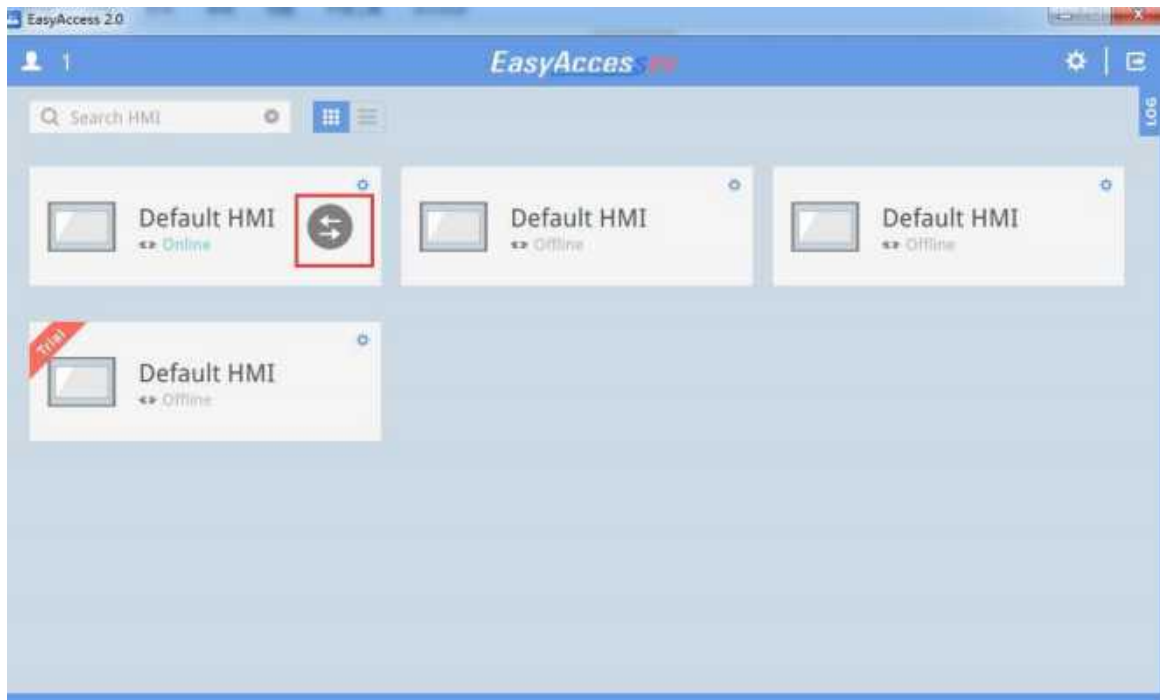


Figure 12

Step 10: Click the red marked button as shown in figure 13

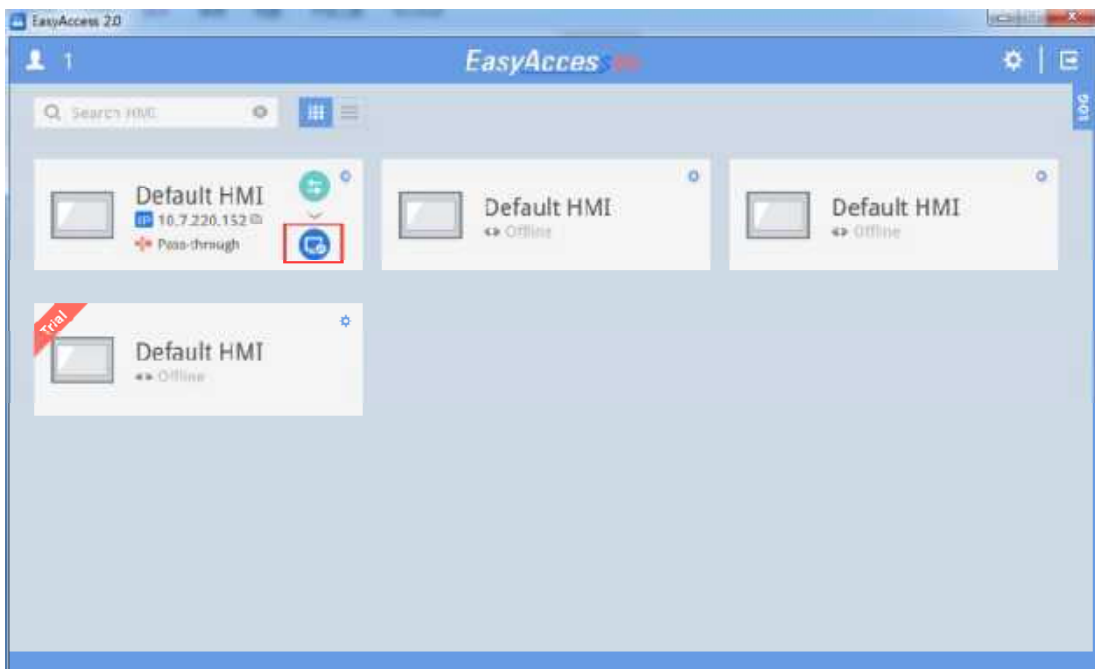


Figure 13

Step 11: Waiting to enter the monitoring interface as shown in figure 14.

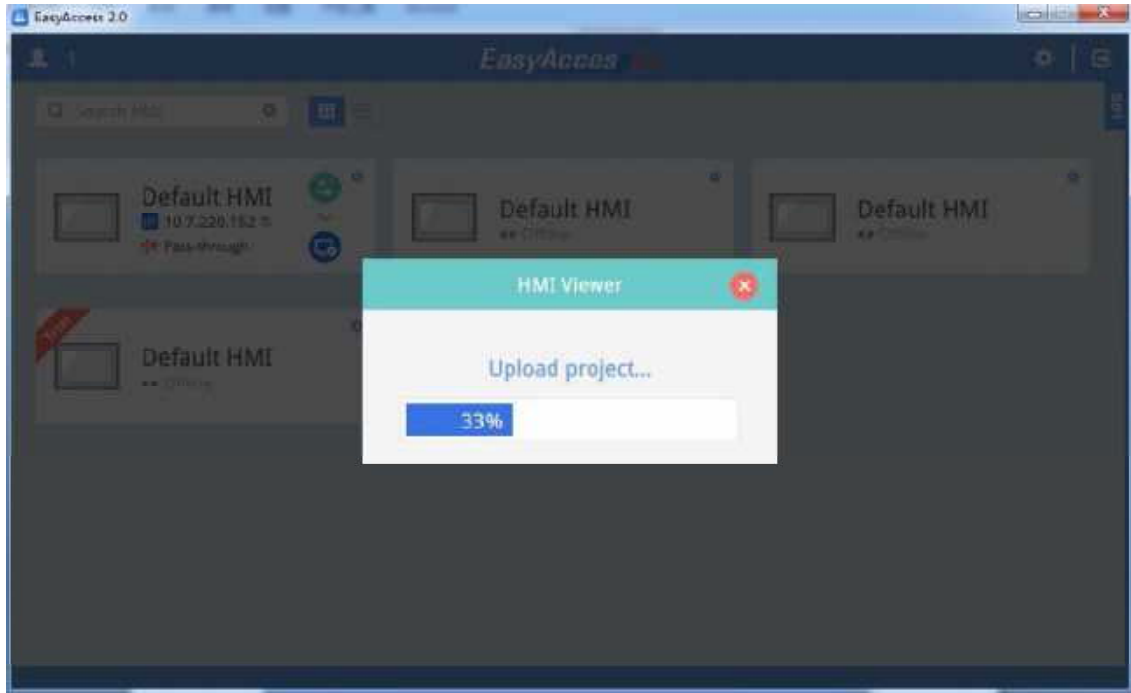


Figure 14

Step 12: Click the red marked place and enter the monitoring interface as shown in figure 15.

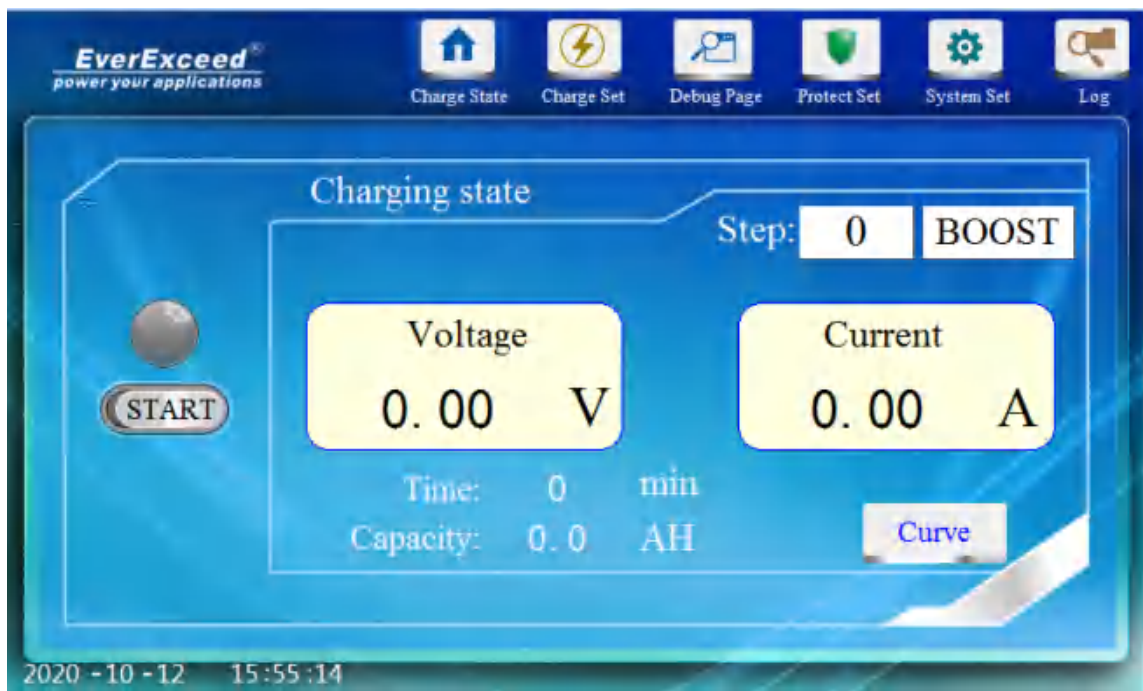


Figure 15



